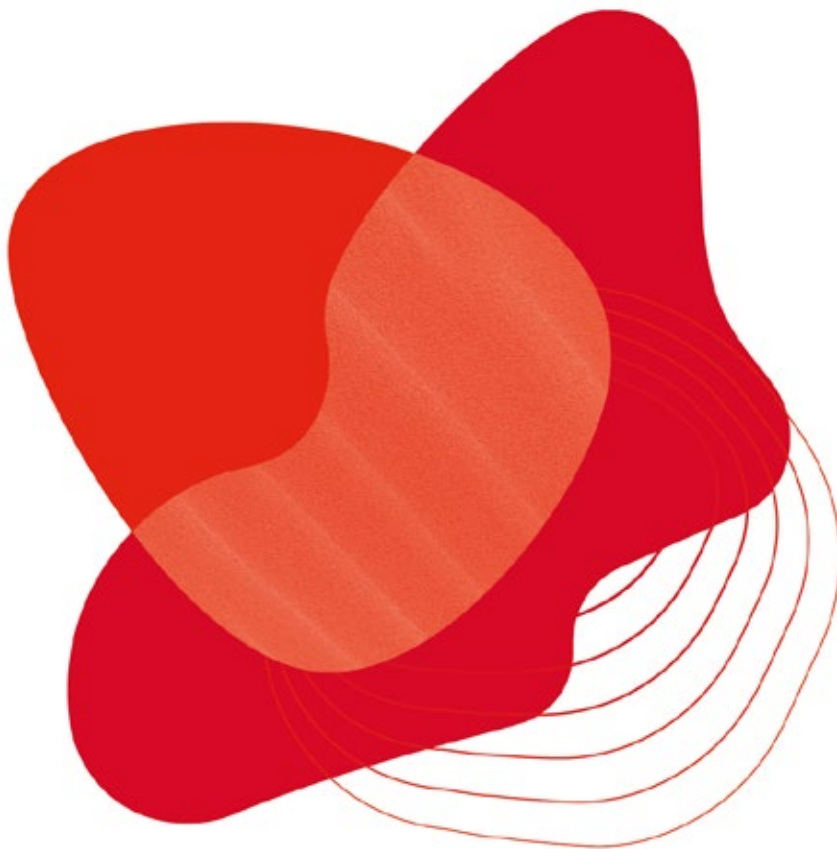



# Wet Glue Label Papers







# Unlocking the power of trees to make every day more sustainable

Sappi is a leading global provider of everyday materials made from woodfibre-based renewable resources.

As a diversified, innovative and trusted leader focused on sustainable processes and products, we are building a more circular economy by making what we should, not just what we can.

Our packaging, speciality and graphic paper products and solutions are manufactured with woodfibre sourced from sustainably managed forests. The production facilities are powered, in many cases, with bio-energy from steam and existing waste streams.

Together with our partners, Sappi works to build a thriving world by acting boldly to support planet, people and prosperity.



Wet Glue Label Papers



Self-adhesive Label & Release Liners



Flexible Packaging Papers



Paperboard



Containerboard



Commercial Print Papers



Publication Papers



Dye Sublimation Papers



# People like you, paper like no other

As a leading global provider of sustainable woodfibre products and solutions, Sappi delivers speciality papers alongside packaging and graphic papers to meet our customers' specific needs.

This means that we are focused on providing an extensive range of innovative, bio-based, recyclable products and services to increase the efficiency, attractiveness and profitability of your brand offering.

At Sappi, our approach is reflected in our core values: innovation, sustainability, effectiveness and partnership.

## Innovation you can count on for your long-term success

We are dedicated to practical, real-world innovation for the benefit of our customers, industry and planet. We invest responsibly in innovative products, services and solutions that offer something new and make a real difference.

Thanks to an ongoing programme of major investment, we continue to add new products to our portfolio. Products that answer real customer needs. Our prestigious research and development department aims to introduce at least two fibre-based innovations per year.



## A rigorous approach to sustainability

Our Sappi purpose sets sustainability at its core. We are here to build a thriving world by unlocking the power of renewable resources that benefit people, communities and the planet.

Our business is based on activating the performance potential that lies within renewable resources to strengthen how we all live, work and prosper.

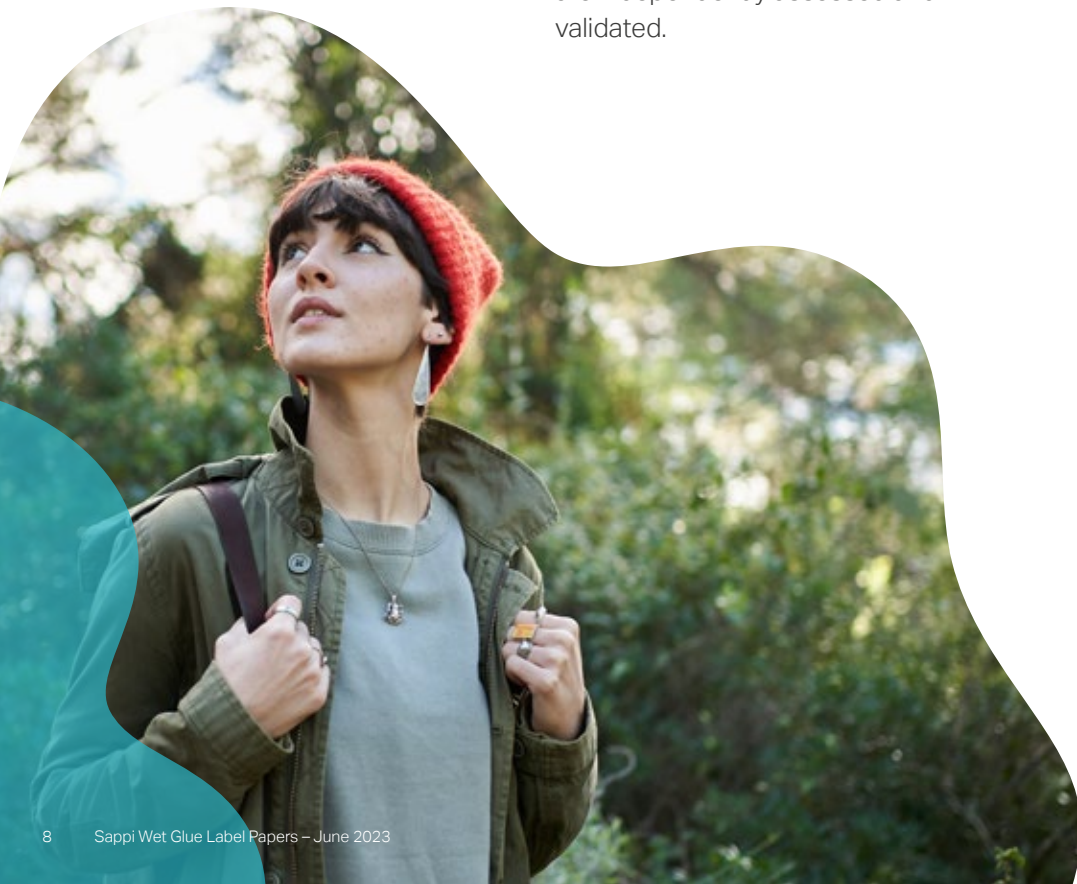
We are fully focused on the capacity of woodfibre and biomaterials to contribute to the creation of a circular economy. We want to satisfy today's needs without compromising tomorrow's prospects.



## A restless pursuit of the circular economy

We utilise natural, renewable resources to create sustainable consumer products for society. That's why we incorporate sustainability into all operational aspects of our business, including developing innovative models to facilitate recycling and minimise waste.

At Sappi, we run our business in a financially viable, environmentally sound and socially responsible manner. We also uphold the best-practice standards in global sustainability. We regularly measure, monitor and communicate our economic, social and environmental performance. Moreover, we keep all processes transparent and maintain a suite of certifications to ensure our actions are independently assessed and validated.



## Today's needs – and tomorrow's opportunities

Paper has long been an effective answer to a wide range of needs and opportunities. We believe never more so than today.

As brands turn away from fossil-based materials to bio-based and renewable alternatives, we are there to support in the right way and moment and with the right message. Our products, engineers and application specialists are on hand to provide effective options and alternatives.

Meanwhile, print is proving that it can reach today's audiences in ways that other marketing channels are unable to emulate. This is where we step in. We provide the products, services and expertise that place print at the heart of the modern marketing mix.

## Dedicated to our customers as valued partners

We believe in the future of paper as an increasingly valuable, vital investment for businesses smart enough to take advantage of what the best in packaging, speciality paper applications and print can offer.

That's why we work closely with our customers as partners – providing not just innovative products but also one-of-a-kind services and support, custom-made to help boost your business. We are always available to discuss your business issues, challenges and opportunities.



# Wet Glue Label Papers







# Wet Glue Label Papers

With their outstanding brightness and excellent printing and metallisation results, our high-quality label papers are an ideal choice for customers looking to achieve high shelf impact and brand differentiation for their products.

Developed for wet-glue labelling of cans, jars and glass bottles, PVC and PET containers, wines, spirits and more. They are the perfect fit for a wide variety of non-wet strength and wet strength wet glue label applications and offer high-quality and consistent results. The label papers offer high operation speed and excellent properties.



# Wet Glue Label Papers

## WET STRENGTH

- Labelcar 6 WSM
- Labelcar MT
- Labelcar WS HG 5

## NON-WET STRENGTH

### Grade from European mills

- Parade Label Pro

### Grade from North American mill

- LusterCote

# Wet Glue Label Papers

	BRAND	CHARACTERISTICS	PRINT PROCESS	CONVERSION PROCESS	APPLICATIONS	g/m <sup>2</sup>	Cans and jars	Returnable glass bottles	PET bottles	Non-returnable glass bottles	Chocolate wrappers / tobacco softpacks
WET STRENGTH	Labelcar 6 WSM	One-side double-coated glossy label paper, wet strength	Flexo, gravure, offset	Die-cutting, embossing	Designed for wet strength wet-glue bottle labels in the beverage industry, such as beer and soft drinks (especially neck labels) and metallised labels	68		•	•	•	
	Labelcar MT	One-side single-coated glossy label paper, wet strength with good dimensional stability and rough back side	Flexo, gravure	Die-cutting, embossing, metallised	Designed for wet strength wet-glue bottle labels and metallisation bottle labels in the beverage industry, such as beer and soft drinks	60, 65, 68, 70, 75, 80		•	•	•	
	Labelcar WS HG 5	One-side double-coated glossy label paper, wet strength	Flexo, gravure, offset	Die-cutting, embossing and hologram (or hologram film applications)	Designed for wet strength bottle labels in the beverage industry	75	•	•	•	•	
NON-WET STRENGTH	Parade Label Pro (from European mills)	Top side double-coated and reverse side single coated glossy label paper, non-wet strength	Flexo, gravure, offset	Cold foil stamping, embossing, hot foil stamping, lamination, varnishing	Designed for wet-glue labels and wrapping applications	80, 90, 100, 110, 120	•		•	•	•
	LusterCote (from North American mill)	Top side single-coated and reverse side uncoated glossy label paper, non-wet strength	Flexo, gravure, offset	Embossing, hot-melt gluing, lamination, special effect coatings, varnishing, wet-glue lamination	Designed for wet-glue labels and wrapping applications	81, 89, 96, 104, 118, 141	•		•	•	•

sappi | **Labelcar**  
6 WS M

One-side double-coated semi-gloss label paper. Designed for wet strength wet-glue bottle labels in the beverage industry, such as beer and soft drinks (especially neck labels).

**BENEFITS**

- Akali-resistant
- High wet strength
- Very good ink retention
- Short wash-off time (returnable bottles)
- Very good printing results
- Good runnability on labelling process
- High and consistent quality
- Perfect fit for different label applications, especially meeting the requirements of the beer industry

FEATURES	
<b>SURFACE</b>	Calendered, glossy, top side double-coated, reverse side single-coated
<b>FORMAT</b>	Reel
<b>PRINT PROCESS</b>	Flexo, gravure, offset
<b>CONVERSION PROCESS</b>	Die-cutting, embossing
<b>CERTIFICATES</b>	Available as FSC™ (FSC™ C015022) certified on request. The production mill is certified: ISO 9001, ISO 14001, ISO 50001, ISO 45001 / OHSAS 18001, DIN EN 15593
<b>GRAMMAGE (GSM)</b>	68
<b>END USES</b>	Returnable glas bottles, non-returnable glas bottles, PET bottles

sappi | **Labelcar**  
MT

One-side single-coated glossy label paper with good dimensional stability and rough back side. Designed for wet strength wet-glue bottle labels and metallistaion bottle labels in the beverage industry, such as beer and soft drinks.

**BENEFITS**

- Akali-resistant
- Good dimensional stability
- High wet strength
- Very good ink retention
- Short wash-off time (returnable bottles)
- Very good printing and metallisation results
- Achieving high shelf impact
- High and consistent quality
- Perfect fit for different label applications (especially in the beer industry)

FEATURES	
<b>SURFACE</b>	Calendered, top side single-coated, semi-gloss
<b>FORMAT</b>	Reel
<b>PRINT PROCESS</b>	Flexo, gravure, offset
<b>CONVERSION PROCESS</b>	Die-cutting, embossing, metallisation
<b>CERTIFICATES</b>	Available as FSC™ (FSC™ C015022) certified on request. The production mill is certified: ISO 9001, ISO 14001, ISO 50001, ISO 45001 / OHSAS 18001, DIN EN 15593
<b>GRAMMAGE (GSM)</b>	60, 65, 68, 70, 75, 80
<b>END USES</b>	Returnable glas bottles, non-returnable glas bottles, PET bottles



One-side double-coated high gloss label paper, wet strength. Designed for wet-glue bottle labels.

**BENEFITS**

- Akali-resistant
- Excellent printing and metallisation results
- Short wash-off time (returnable bottles)
- Achieving high shelf impact
- High and consistent quality
- Perfect fit for different label applications (especially in the beer industry)

FEATURES	
<b>SURFACE</b>	Calendered, top side double-coated, reverse side single-coated, high gloss
<b>FORMAT</b>	Reel, sheet
<b>PRINT PROCESS</b>	Flexo, gravure, offset
<b>CONVERSION PROCESS</b>	Die-cutting, embossing, hologram (or holographic film application)
<b>CERTIFICATES</b>	Available as FSC™ (FSC™ C015022) certified on request. The production mill is certified: ISO 9001, ISO 14001, ISO 50001, ISO 45001 / OHSAS 18001, DIN EN 15593
<b>GRAMMAGE (GSM)</b>	75
<b>END USES</b>	Cans and jars, returnable glas bottles, non-returnable glas bottles, PET bottles

One-side double-coated glossy label paper. Designed for wet glue labels and wrapping applications.

**BENEFITS**

- Suitable for direct food contact
- Strong mechanical properties and superior runnability
- Reliability in the production process
- High labelling performance and fast operation speed
- Sustainable and environmetally friendly solution
- Superior converting properties
- Excellent print gloss
- High shelf impact and brand differentiation
- Secure supply

FEATURES	
<b>SURFACE</b>	Calendered, top side double-coated, reverse side coated, glossy
<b>FORMAT</b>	Reel, sheet
<b>PRINT PROCESS</b>	Flexo, gravure, offset
<b>CONVERSION PROCESS</b>	Cold foil stamping, hot foil stamping, embossing, lamination, varnishing
<b>CERTIFICATES</b>	Available as FSC™ (FSC™ C015022) and PEFC (PEFC/07-32-76) certified on request. The production mill is certified: ISO 9001, ISO 14001, ISO 50001, ISO 45001 / OHSAS 18001, suitable for direct food contact
<b>GRAMMAGE (GSM)</b>	80, 90, 100, 110, 120
<b>END USES</b>	Cans and jars, PET bottles, non-returnable glas bottles, chocolate wrappers and tobacco softpacks

Developed to deliver the brand owner’s message with excellence, LusterCote offers a high level of brightness, print performance and production efficiency.

**BENEFITS**

- Excellent brightness and optical quality
- Superior print performance using conventional and UV curable inks
- Unique back-side coating
- Consistent laminating qualities with a wide range of adhesives
- High operational efficiency
- Superb print results
- Delivers the brand owner’s message with accuracy and excellence
- Wide range of applications

FEATURES	
<b>SURFACE</b>	Calendered, top side single-coated, reverse side uncoated, gloss
<b>FORMAT</b>	Reel, sheet
<b>PRINT PROCESS</b>	Flexo, gravure, offset
<b>CONVERSION PROCESS</b>	Embossing, hot-melt gluing, lamination to corrugated and solid board, paper sheet-to-sheet lamination, special effect coatings, varnishing, wet-glue lamination
<b>CERTIFICATES</b>	FSC™ CoC (FSC-C014955), FSC Controlled Wood, PEFC CoC (PEFC/29-31-10), SFI® CoC, SFI Fiber Sourcing
<b>GRAMMAGE (GSM)</b>	81, 89, 96, 104, 118, 141
<b>END USES</b>	Cans and jars, PET bottles, non-returnable glass bottles, chocolate wrappers and tobacco softpacks



# Production sites of Wet Glue Label Papers



## SAPPI ALFELD (GERMANY)

Name of the mill	Alfeld Mill				
Annual capacity (tons)	275,000				
	PM 1	PM 2	PM 3	PM 4	PM 5
Grammage range (gsm)	160 - 500	40 - 180	36 - 100	62 - 180	18 - 60
Production of paper	Flexible Packaging Papers, <b>Wet Glue Label Papers</b> , Containerboard, Paperboard, Self-adhesive Label and Release Liners, Dye Sublimation Papers				

Products are available FSC™ (FSC™ C015022) or PEFC (PEFC/07-32-76) certified upon request/subject to availability.



## SAPPI CARMIGNANO (ITALY)

Name of the mill	Carmignano Mill	
Annual capacity (tons)	100,000	
	PM 4	PM 6
Grammage range (gsm)	40 - 125	40 - 70
Production of paper	Flexible Packaging Papers, Self-adhesive Label and Release Liners, <b>Wet Glue Label Papers</b> , Dye Sublimation Papers	

Products are available FSC™ (FSC™ C015022) or PEFC (PEFC/07-32-76) certified upon request/subject to availability.

## SAPPI GRATKORN (AUSTRIA)

Name of the mill	Gratkorn Mill	
Annual capacity (tons)	980,000	
	PM 9	PM 11
Grammage range (gsm)	77 - 118	115 - 350
Production of paper	Self-adhesive Label and Release Liners, <b>Wet Glue Label Papers</b> , Containerboard, Commercial Print Papers	



Products are available FSC™ (FSC™ C015022) or PEFC (PEFC/07-32-76) certified upon request/subject to availability.

## SAPPI SOMERSET (USA)

Name of the mill	Somerset Mill	
Annual capacity (tons)	970,000	
	PM 1	PM 2
Grammage range (gsm)	185 - 352	59 - 104
Production of paper	<b>Wet Glue Label Papers</b> , Self-adhesive Label and Release Liners, Paperboard, Flexible Packaging Papers, Graphic Papers	



Products are sold standard with a SFI® Certified Sourcing claim to North American-based customers. Eligible for FSC Mix Credit (FSC™-C014955), SFI ≥20% Certified Forest Content, or 100% PEFC (PEFC/29-31-10) CoC claims, based upon customer request, availability of credits, and applicable upcharges.

# Sappi at a glance



Sales: USD 7.296 million



Production facilities: 10 in Europe, 4 in North America and 5 in South Africa

- Paper capacity per year: 5.5 million tonnes
- Paper pulp capacity per year: 2.6 million tonnes
- Dissolving pulp (DP) capacity per year: 1.5 million tonnes



400,000 ha owned and leased sustainably managed forests in South Africa



Approximately 12,500 employees worldwide



Global network, infrastructure and business in 150 countries

Figures based on Sappi 2022 Annual Integrated Report





## Sustainability at Sappi. Every day and every shift.

Our business relies on natural, renewable resources. These resources enable us to create sustainable products for society's use. This connection to nature also compels us to act responsibly and ensure that sustainability is incorporated into all aspects of our operations.

Sappi holds itself accountable to global sustainability best practice standards by transparently and regularly measuring, monitoring and communicating its economic, social and environmental performance. We also maintain a suite of certifications to ensure that our actions are assessed and validated independently.

All Sappi mills are Chain of Custody certified which enables us to track certified woodfibre from the forest through production and into our final products. Knowing the origin of woodfibre is a fundamental prerequisite for responsible sourcing.

All our woodfibre is sourced from controlled, non-controversial sources in accordance with the FSC Controlled Wood Standard, as well as the PEFC (and SFI® in the United States) risk-based due diligence systems.

# SUSTAINABLE DEVELOPMENT GOALS

Sappi's approach to sustainability is aligned with the United Nations Sustainable Development Goals. To focus our actions where we can make the biggest contribution, we have selected seven out of the 17 priority goals to focus on.



Ensure availability and sustainable management of water and sanitation for all.



Ensure access to affordable, reliable, sustainable and modern energy for all.



Promote sustained, inclusive and sustainable economic growth, full and productive employment and decent work for all.



Ensure sustainable production and consumption patterns by doing more with less.



Take urgent action to combat climate change and its impacts.



Protect, restore and promote sustainable use of terrestrial ecosystems, sustainably manage forests, combat desertification, and halt and reverse land degradation and halt biodiversity loss.



Strengthen the means of global partnership for sustainable development.



# Six pledges to you as our partners

- We will always work to make the best of our knowledge and experience available to you
- We will be your trusted and innovative partner to thrive together towards a bio-based circular economy
- We will continue to invest in the future of paper – because paper is made from a natural material that is renewable and recyclable
- We will maintain the highest and most consistent quality in our products and services
- Our ambitions and our presence will remain global
- Security of supply and on-time delivery will always be at the core of our offer to you

IMPORTANT: This document is for information purposes only. The information given has been prepared to the best of our knowledge, i.e. based on due diligence and the state of research at the time of its release date. It does not provide any warranty or guarantee for specific properties or for suitability for a specific purpose or application. Responsibility for testing the suitability of the product for specific applications lies entirely with the purchaser. We reserve our right to change this document at any time.



**Contact us**

sappi-bsp.com  
bsp@sappi.com



**sappi**